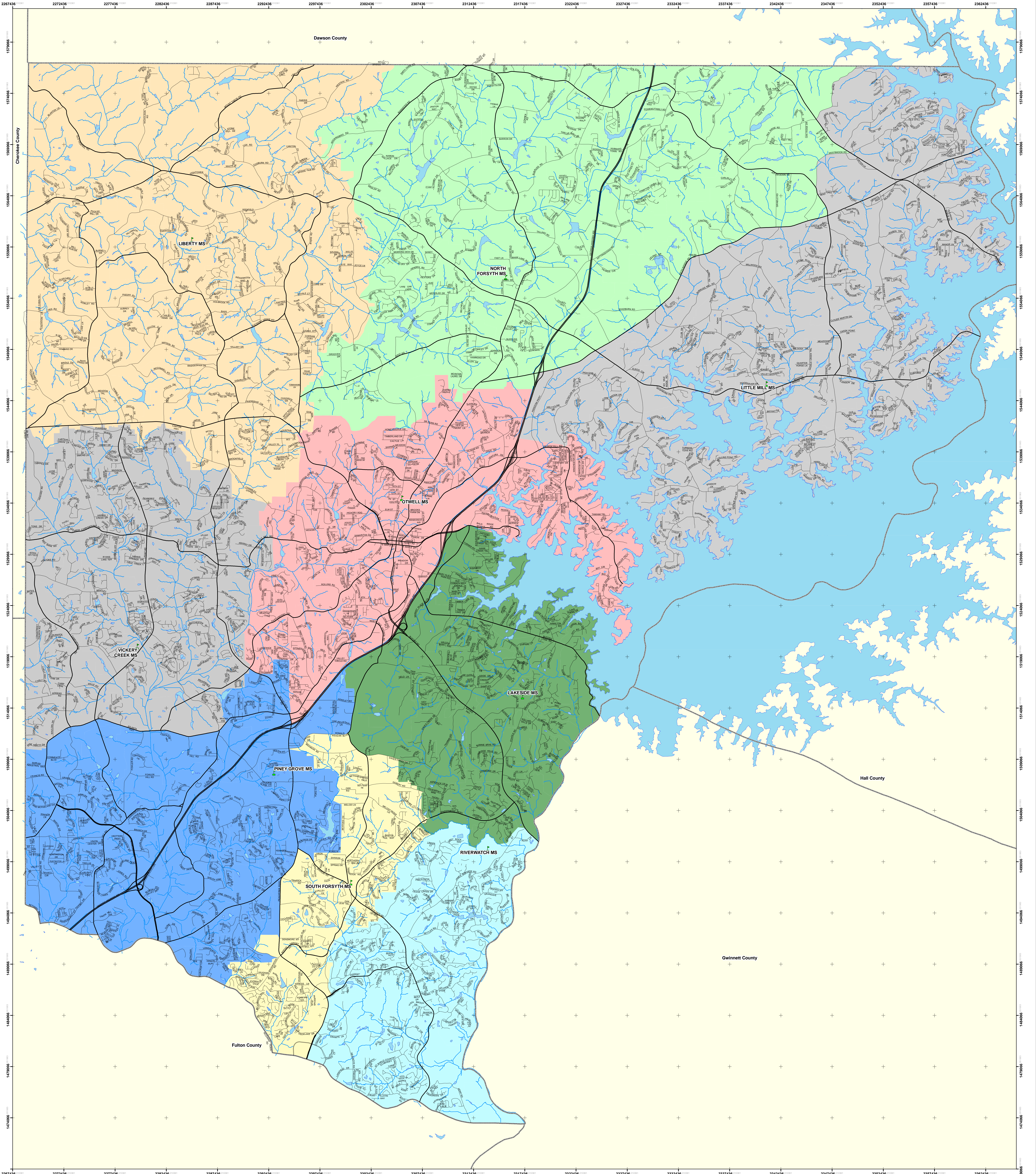


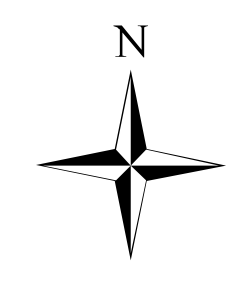
Middle School Attendance Zones (2009-2010)



- Legend**
- Schools
 - Major Roads
 - Roads
 - Lakes
 - Streams/Rivers
 - Area Counties
 - Lakeside MS
 - North Forsyth MS
 - Liberty MS
 - Otwell MS
 - Piney Grove MS
 - Riverwatch MS
 - South Forsyth MS
 - Vickers Creek MS
 - Little Mill MS



Quality Learning and Superior Performance for All



Coordinate System:
State Plane - Georgia West FIPS 1002
Feet - U.S. Survey
Projection:
Transverse Mercator
Datum:
North American Datum of 1983

Produced by the Department of Facilities
Forsyth County Board of Education
Forsyth County, Georgia
© COPYRIGHT Forsyth County Schools, GA 2008
Printing Date: October 16, 2008

Major Sources: Forsyth County Government GIS,
Forsyth County Schools GIS and Student Information database
Created in ArcGIS 9.2 using ArcMap

The information included on this map has been compiled by Forsyth County staff from a variety of sources and is subject to change without notice. Forsyth County makes no representations or warranties, express or implied, as to accuracy, completeness, timeliness, or rights to the use of such information. Forsyth County shall not be liable for any general, special, indirect, incidental, or consequential damages including, but not limited to, lost revenues or lost profits resulting from the use or misuse of the information contained on this map. Any sale of this map or information on this map is prohibited except by written permission of Forsyth County.

Approved by Forsyth County Board of Education on October 16, 2008