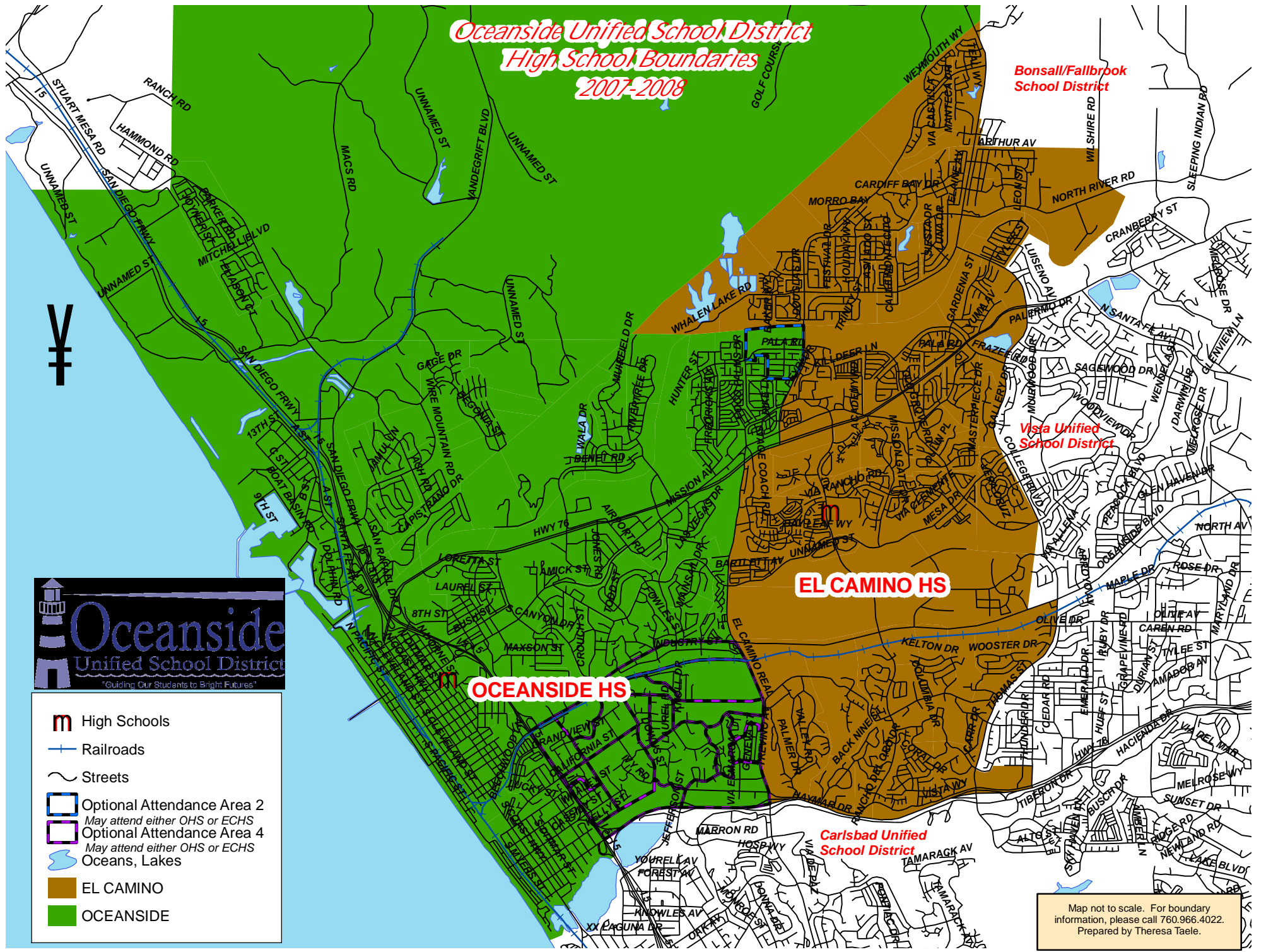


# Oceanside Unified School District High School Boundaries 2007-2008



- High Schools
- Railroads
- Streets
- Optional Attendance Area 2  
May attend either OHS or ECHS
- Optional Attendance Area 4  
May attend either OHS or ECHS
- Oceans, Lakes
- EL CAMINO
- OCEANSIDE

Map not to scale. For boundary information, please call 760.966.4022.  
Prepared by Theresa Taele.