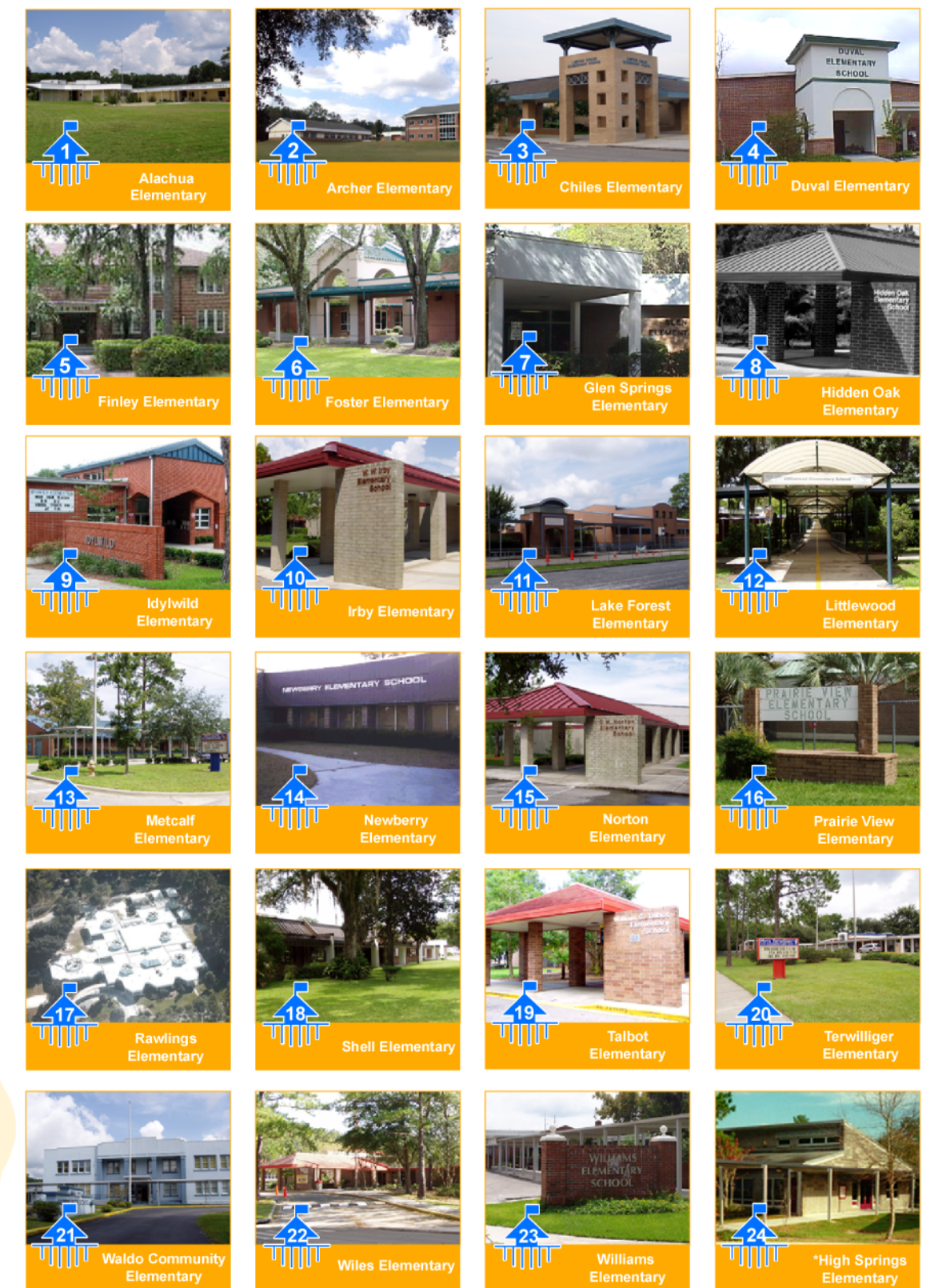
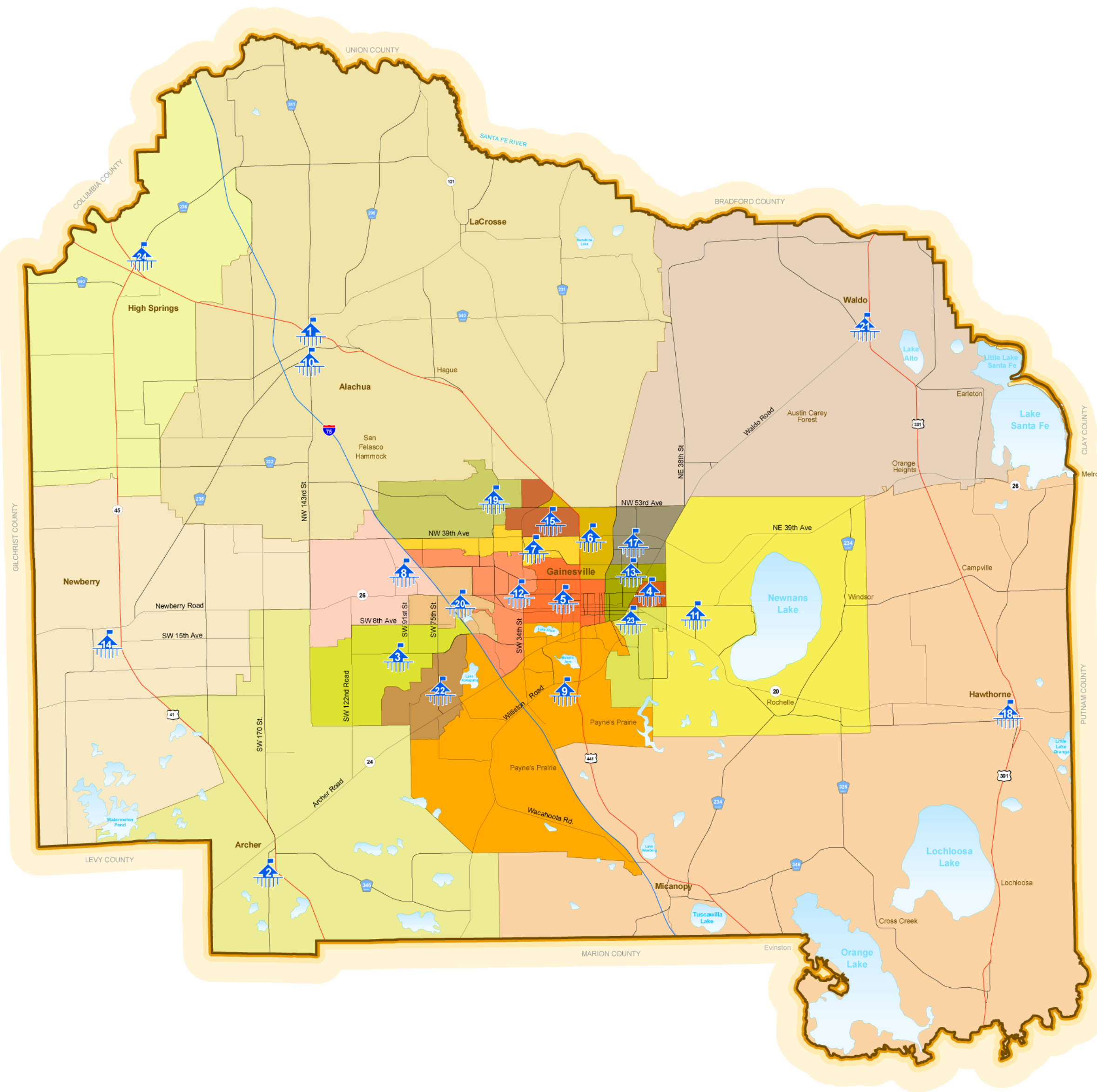
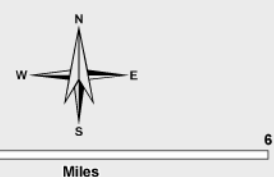


2008-2009 ADOPTED SBAC PUBLIC ELEMENTARY SCHOOL ZONE BOUNDARIES- ALACHUA COUNTY, FLORIDA



*See Capacity and Enrollment numbers in table of Middle Schools



Prepared at:
 Board of Commissioners
 Alachua County, Florida
 Department of Growth Management
 10 SW 2nd Avenue, Gainesville, FL 32601
 (352) 374-5249
<http://growth-management.alachua.fl.us/>

Notes:

1. All school locations were first derived from a name and address list given by the School Board of Alachua County, and then located using the Alachua County Property Appraiser's Parcel layer.
2. This map displays the 2008-2009 Alachua County urban area school zones for public schools. The school zones for elementary, middle, and high schools in Alachua County were drastically adjusted during the December 2, 2003 School Board meeting. All of the approved public school zoning adjustments of that meeting are reflected in this map. The School Board has available a PDF image of the updated public school zones on their website <http://www.sbac.edu/>
3. The map data for each type of school zone was converted from the School Board's AutoCAD format to ESRI Personal Geodatabase Feature Class. The original AutoCAD layer delineated zoning district boundaries by roadways only. Alachua County Growth Management fitted these boundaries to parcel boundaries, which increases the precision but may be in error in some places. Therefore, this map is not considered official until approved by the SBAC.

Notes:

Map and Documentation are located at:
<http://growth-management.alachua.fl.us/gis/gallery/postermaps.php>
 Poster Size: 36 x 30
 Date of Production: 1/13/2009
 File on Disk: F:\GIS\Projects\Poster_Maps\Public_Elementary_School_Zones.mxd