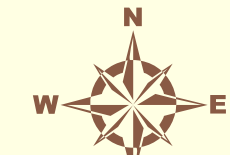


**Lake County School Board
2008 - 2009 Middle School
Attendance Zone Boundary
Gray Middle School -- North**

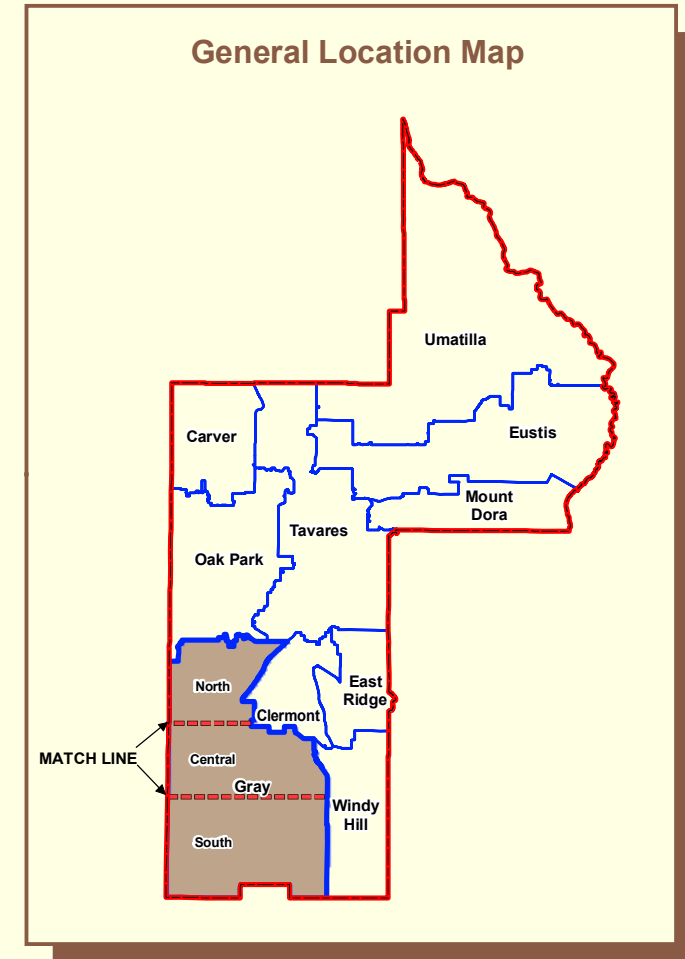


2,000 1,000 0 2,000
Feet

1 inch equals 2,000 feet

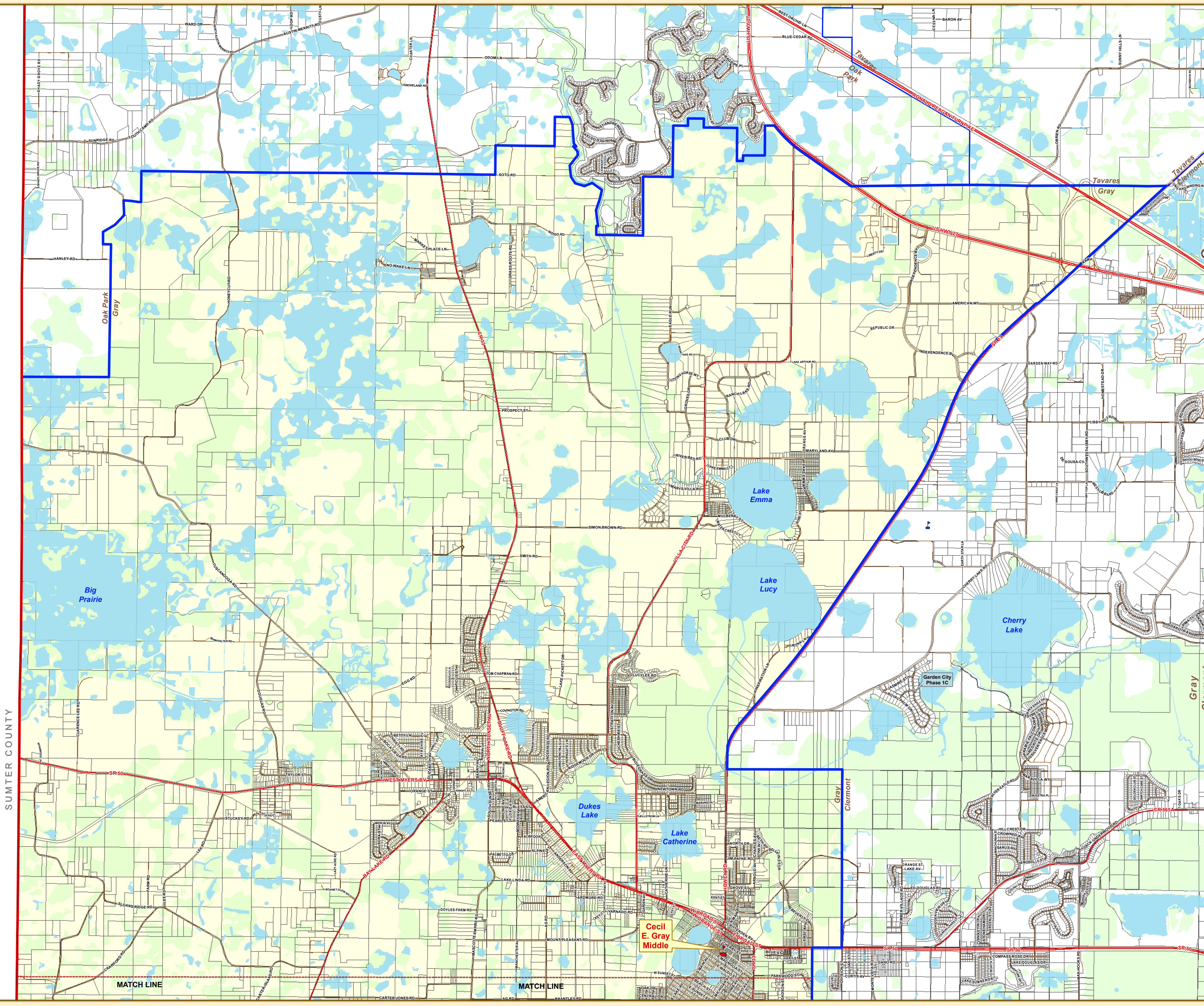
File No.: Gray_Middle_North_2008.mxd
Date: February 25, 2008
Revision Date: May 13, 2008
Created By: J. Wilson
Source: Co. Boundary, Section Grid,
Transportation Network, Lakes
and Subdivision Coverage's obtained
from Lake Co. GIS.
Created in ArcGIS 9.2 using ArcMap.

Prepared for:



Legend

- Lake County Boundary
- Middle School Attendance Zones
- Lake County Tax Parcels
- Lake County Middle Schools
- Cecil E. Gray Middle School
- Major Transportation Network
- Minor Transportation Network
- Wetlands
- Lakes and Waterways

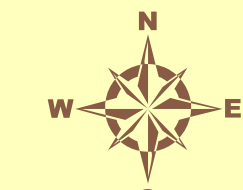


MATCH LINE

MATCH LINE

Cecil E. Gray Middle

Lake County School Board
 2008 - 2009 Middle School
 Attendance Zone Boundary
 Gray Middle School -- Central

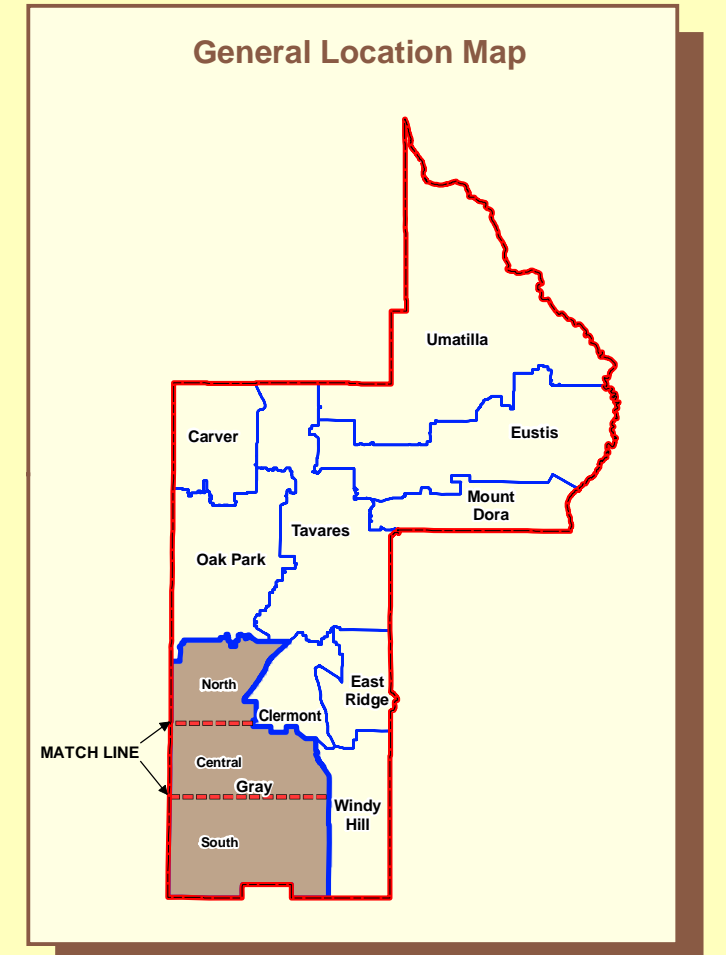


1,000 0 1,000 2,000 3,000
 Feet

1 inch equals 2,500 feet

File No.: Gray_Middle_Central_2008.mxd
 Date: February 25, 2008
 Revision Date: May 13, 2008
 Created By: J. Wilson
 Source: Co. Boundary, Section Grid,
 Transportation Network, Lakes
 and Subdivision Coverage's obtained
 from Lake Co. GIS
 Created in ArcGIS 9.2 using ArcMap

Prepared for:



SUMTER COUNTY

SUMTER COUNTY

MATCH LINE

MATCH LINE

Cecil
 E. Gray
 Middle

MATCH LINE

MATCH LINE

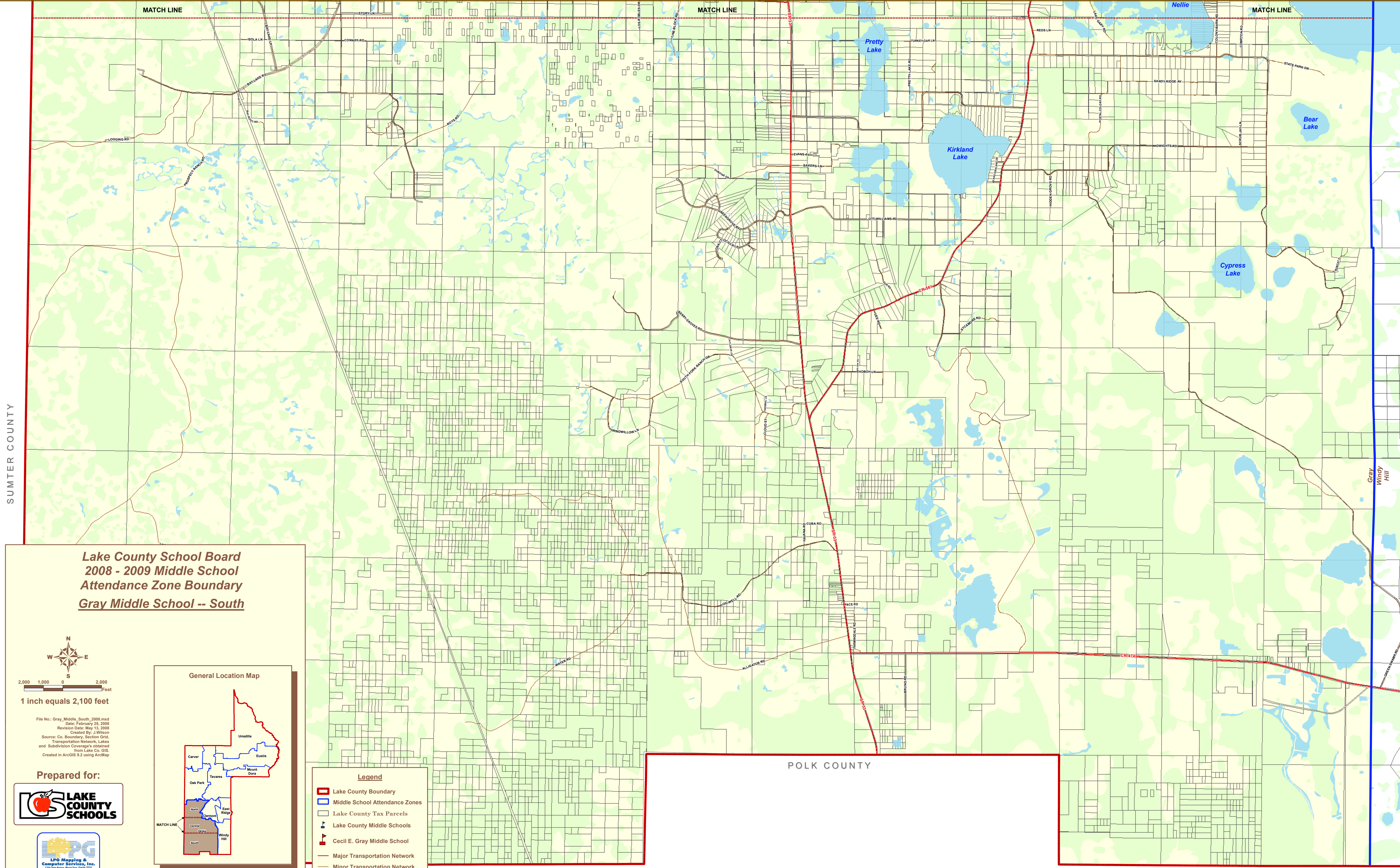
MATCH LINE

Gray
 Windy Hill

Middle
 School

Legend

- Lake County Boundary
- Middle School Attendance Zones
- Lake County Middle Schools
- Cecil E. Gray Middle School
- Minor Transportation Network
- Major Transportation Network
- Wetlands
- Lakes and Waterways



**Lake County School Board
2008 - 2009 Middle School
Attendance Zone Boundary
Gray Middle School -- South**

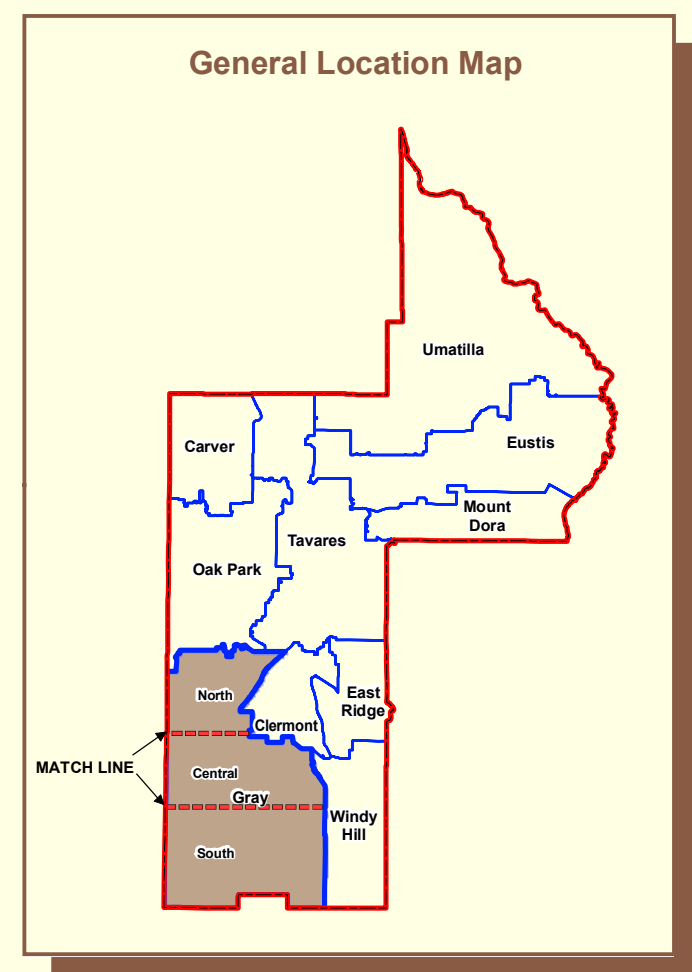


2,000 1,000 0 2,000
Feet

1 inch equals 2,100 feet

File No.: Gray_Middle_South_2008.mxd
Date: February 25, 2008
Revision Date: May 13, 2008
Created By: J. Wilson
Source: Co. Boundary, Section Grid,
Transportation Network, Lakes
and Subdivision Coverage's obtained
from Lake Co. GIS.
Created in ArcGIS 9.2 using ArcMap

Prepared for:



Legend

- Lake County Boundary
- Middle School Attendance Zones
- Lake County Tax Parcels
- + Lake County Middle Schools
- + Cecil E. Gray Middle School
- Major Transportation Network
- Minor Transportation Network
- Wetlands
- Lakes and Waterways

POLK COUNTY