



St. Mary's County Public Schools

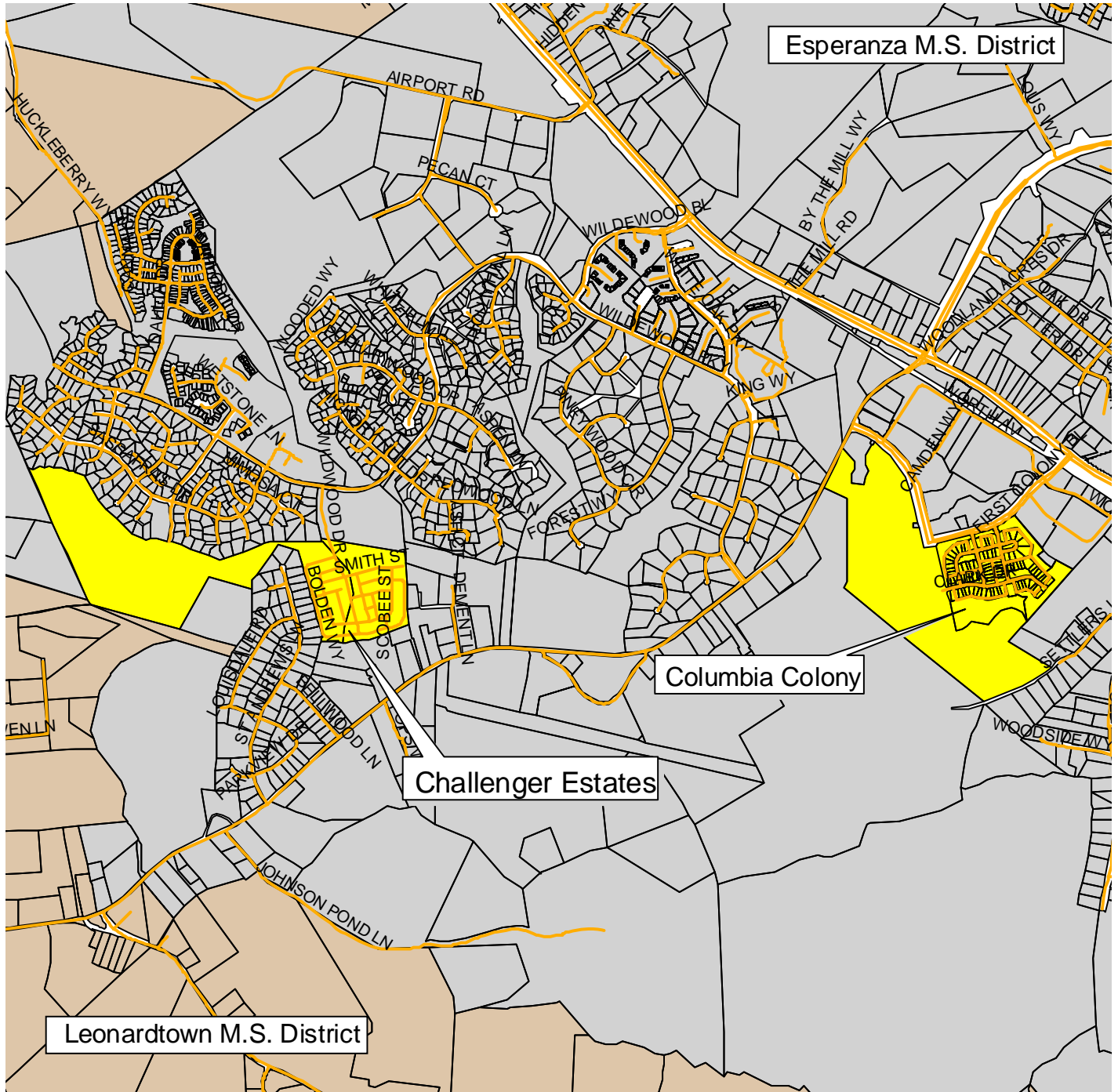
Realignment Plan 2 Middle School Plan

This approved boundary realignment plan addresses minor changes to middle school boundaries in the Lexington Park/Great Mills area as a result of new development projects and permanently addresses the finalization of military housing from the Patuxent River Naval Air Station to the California area.

Middle School Plan – Section 1

From Spring Ridge Middle School to Esperanza Middle School

No. of Students: 14

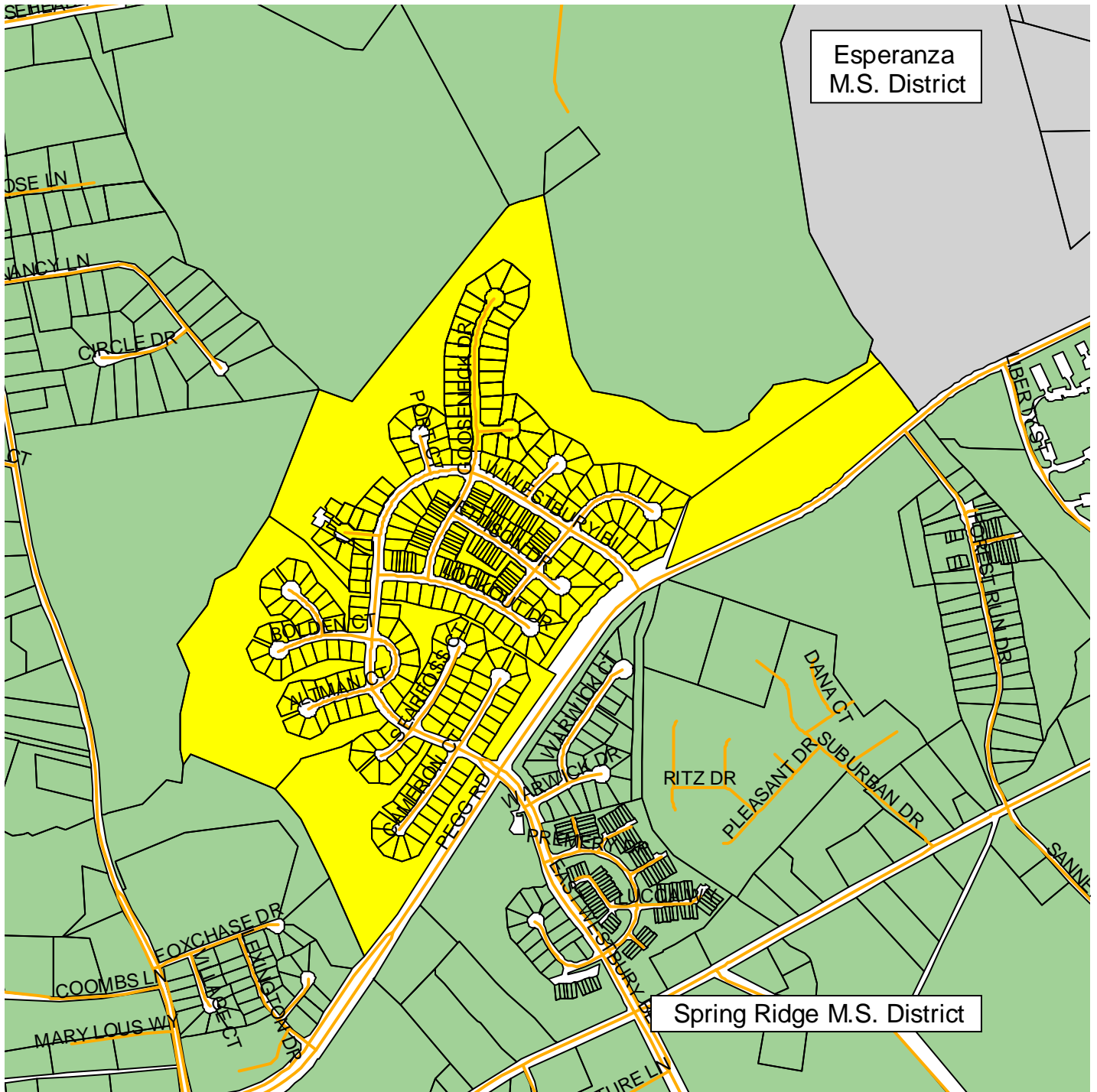


Prepared by the Department of Capital Planning, October 15, 2008

Middle School Plan – Section 2

From Esperanza Middle School to Spring Ridge Middle School

No. of Students: 41

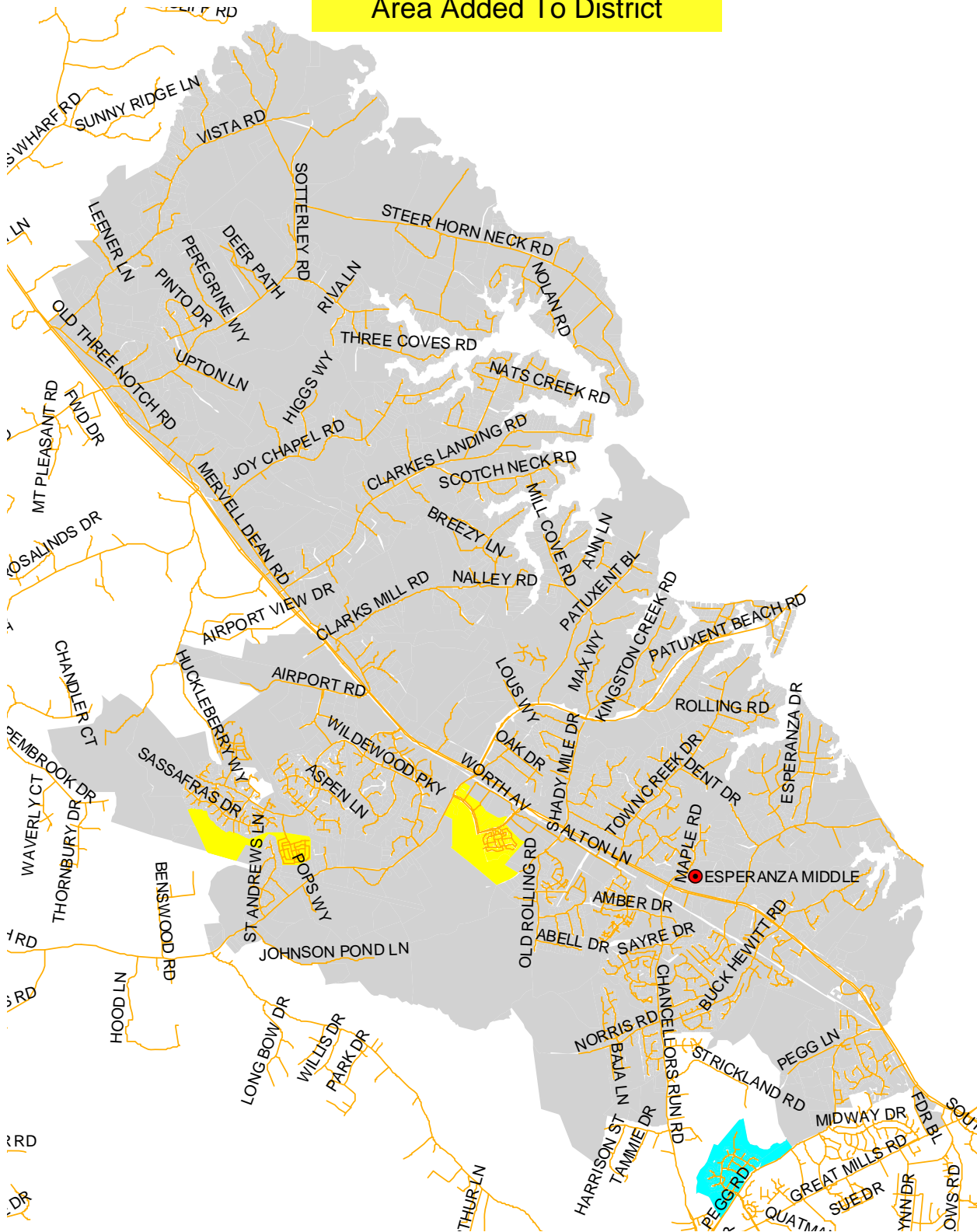


Prepared by the Department of Capital Planning, October 15, 2008

Esperanza Middle School

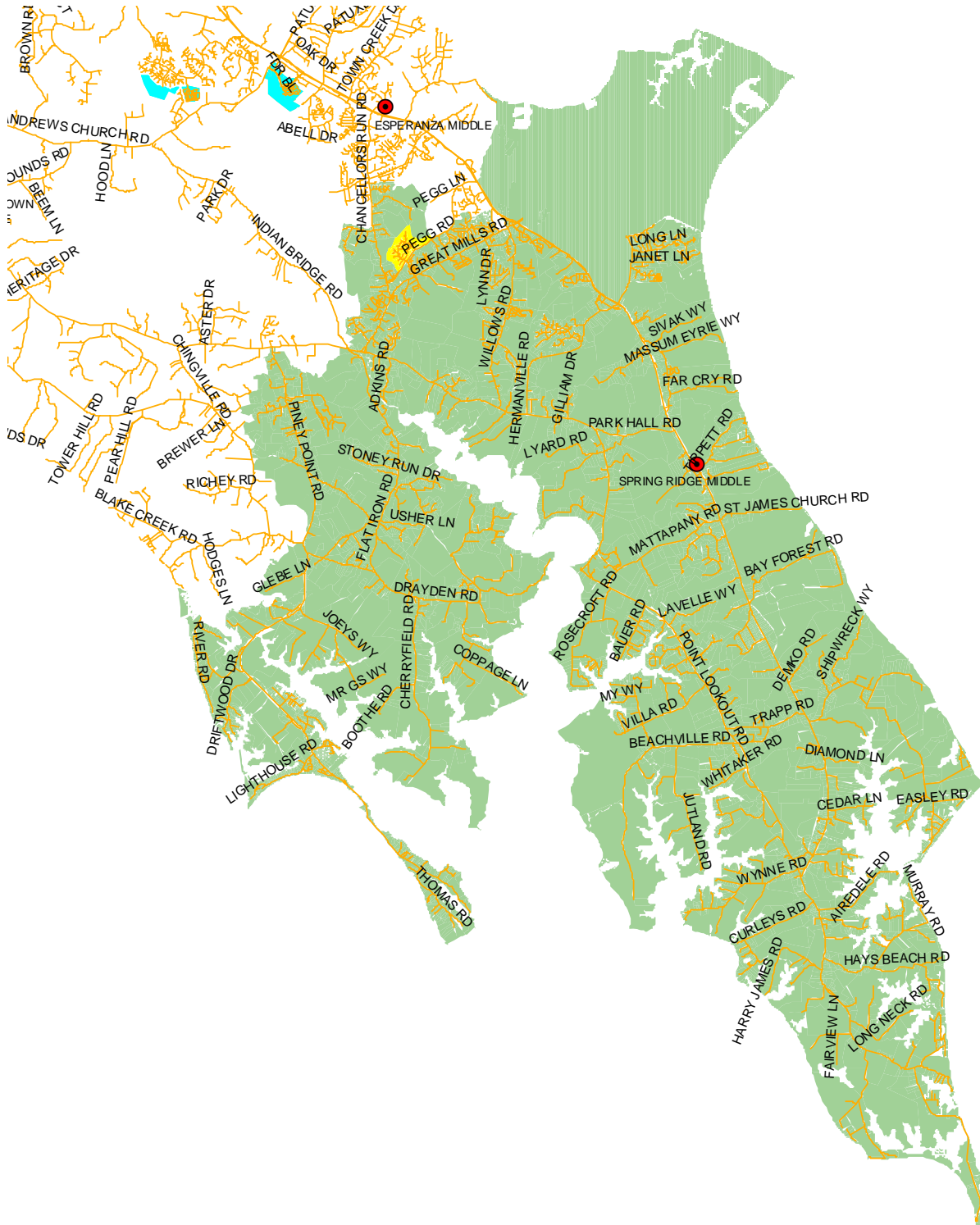
District Changes

Area Removed From District
Area Added To District



Spring Ridge Middle School District Changes

Area Removed From District
Area Added To District





St. Mary's County Public Schools

Realignment Plan 3 High School Plan

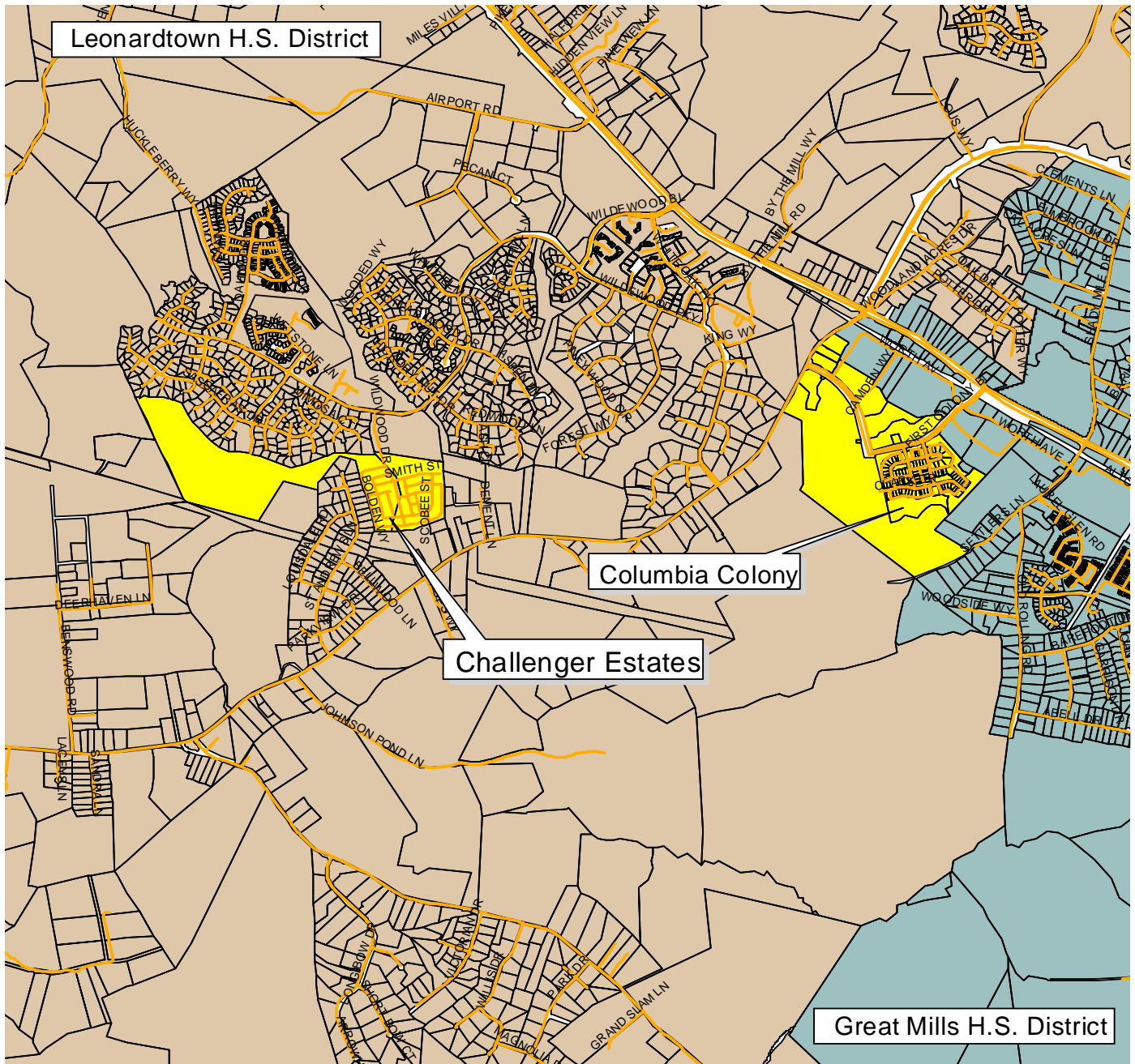
This approved boundary realignment plan permanently addresses the finalization of military housing from the Patuxent River Naval Air Station to the California area.

High School Plan

From Great Mills High School to Great Mills High School (Columbia Colony)

From Great Mills High School to Leonardtown High School (Challenger Estates)

No. of Students: 19



Prepared by the Department of Capital Planning, October 15, 2008

Leonardtwn High School District Changes

Area Added To District

