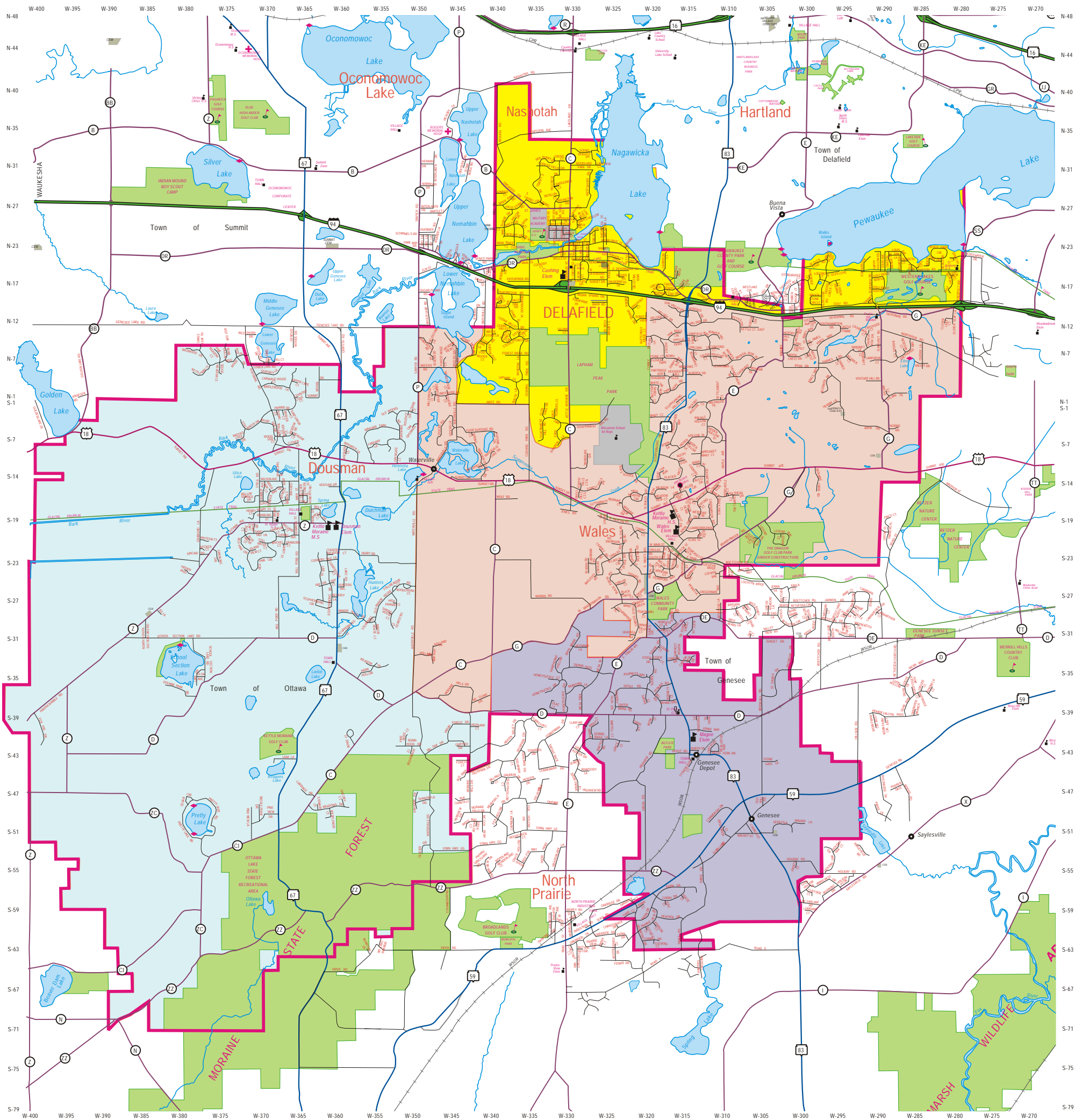


KETTLE MORaine SCHOOL DISTRICT

School Attendance Boundaries



KETTLE MORaine SCHOOL DISTRICT

School Attendance Boundaries

- Entire District Kettle Moraine High School
- Entire District Kettle Moraine Middle School
- Cushing Elementary School
- Dousman Elementary School
- Magee Elementary School
- Wales Elementary School

CUSHING ELEMENTARY SCHOOL
 227 Genesee Street
 Delafield, WI 53018
 Phone: 262-646-6700
 Fax: 262-646-6730
 Principal - Amanda Thompson

DOUSMAN ELEMENTARY SCHOOL
 341 E. Ottawa Avenue
 Dousman, WI 53118
 Phone: 262-965-6550
 Fax: 262-965-6559
 Principal - Brian Stuckey

MAGEE ELEMENTARY SCHOOL
 W313 S4134 HWY 83
 Genesee Depot, WI 53127
 Phone: 262-968-6450
 Fax: 262-968-6470
 Principal - Maria Kucharski

WALES ELEMENTARY SCHOOL
 219 Oak Crest Drive
 Wales, WI 53183
 Phone: 262-968-6400
 Fax: 262-968-6405
 Principal - Rick Gothaus

KETTLE MORaine MIDDLE SCHOOL
 301 E. Ottawa Avenue
 Dousman, WI 53118
 Phone: 262-965-6515
 Fax: 262-965-6506
 Principal - David Carr
 Associate Principal - Andrea Daniels
 Associate Principal - Mary Hauke

KETTLE MORaine HIGH SCHOOL
 349 Oak Crest Drive
 Wales, WI 53183
 Phone: 262-968-6200
 Fax: 262-968-6217
 Principal - David Hay
 Associate Principal - Kehl Arnsen
 Associate Principal - Judy Blackburn

DISTRICT OFFICE
 563 A.J. Allen Circle
 Wales, WI 53183
 Phone: 262-968-6300
 Administration Fax: 262-968-6390
 Business Fax: 262-968-6391
 Superintendent - Patricia Deklotz